

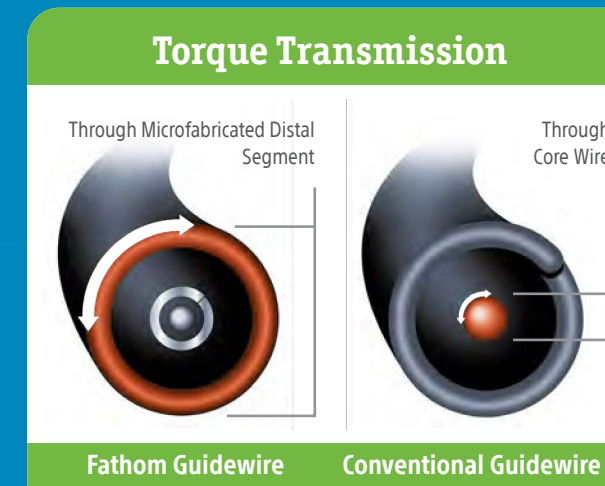
FATHOM™ Steerable Guidewires

REVOLUTIONIZING ACCESS



Transforming Guidewire Flexibility and Trackability

The Fathom™ Steerable Guidewires combine a Nitinol hypotube distal segment with advanced microfabrication technology, creating a design that revolutionizes access of the most tortuous vasculature.



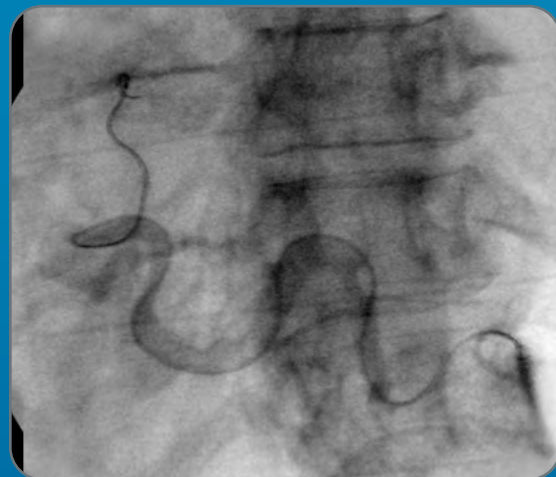
Clinical Flexibility

- Fathom-16 is now available in both 200 and 215 cm lengths
- Pre-shaped tip designed to help access the most difficult anatomy



Hydrophilic Coating

- Lubricious hydrophilic coating on distal segment
- PTFE coating on proximal segment



Microfabrication technology is designed to give you the flexibility and trackability to access tortuous anatomy

Distal Tip Design

- Inner stainless steel core wire for shapeability
- Platinum/tungsten alloy coil tip provides exceptional radiopacity
- Clear polymer tip designed for atraumatic entry into delicate vasculature

Microfabrication Technology

- Diamond-cut Nitinol hypotube maximizes torque transmission
- Alternating pattern of microscopic channels designed to provide outstanding flexibility

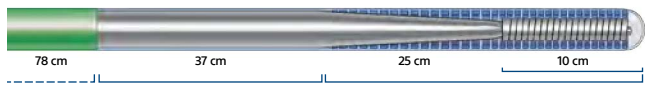
Multiple Sizes for a Variety of Clinical Practice Situations

Fathom-16 Steerable Guidewires

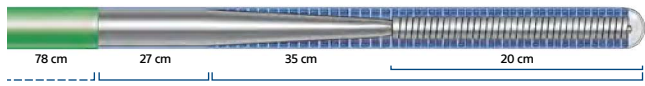
UPN	Order Number	Total Length (cm)	Nitinol Tip Length (cm)	Distal Floppy Tip Length (cm)	O.D. (in)	Tip Shape
M001509000	50-900	140	25	10	0.016	Straight
M001509010	50-901	140	35	20	0.016	Straight
M001509100	50-910	180	25	10	0.016	Straight
M001509110	50-911	180	35	20	0.016	Straight
M001509120	50-912	180	25	10	0.016	Angled
M001509200	50-920	200	25	10	0.016	Straight
M001509210	50-921	200	25	10	0.016	Angled
M001509300	50-930	215	25	10	0.016	Straight
M001509310	50-931	215	25	10	0.016	Angled

Fathom-14 Steerable Guidewires

M001508100	50-810	200	35	10	0.014	Straight
M001508110	50-811	200	35	10	0.014	Angled
M001508140	50-814	300	35	10	0.014	Straight
M001508150	50-815	300	35	10	0.014	Angled



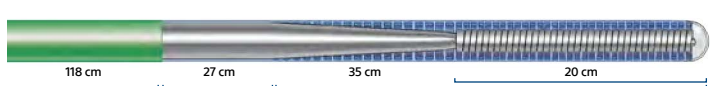
Total Length 140 cm
Outer Diameter 0.016"



Total Length 140 cm
Outer Diameter 0.016"



Total Length 180 cm
Outer Diameter 0.016"



Total Length 180 cm
Outer Diameter 0.016"



Total Length 200 cm
Outer Diameter 0.014"



Total Length 300 cm
Outer Diameter 0.014"

FATHOM-14 STEERABLE GUIDEWIRE

CAUTION: Federal law (USA) restricts this device to sale by or on the order of a physician. Rx only. Prior to use, please see the complete "Directions for Use" for more information on Indications, Contraindications, Warnings, Precautions, Adverse Events, and Operator's Instructions.

INTENDED USE/INDICATIONS FOR USE: The FATHOM-14 Steerable Guidewire is intended for general intravascular use in the peripheral vasculature. It can be used to selectively introduce and position catheters and other interventional devices within the peripheral vasculature. This device should be used only by physicians trained in percutaneous, intravascular techniques and procedures. **CONTRAINDICATIONS:** None known. **WARNINGS:** The FATHOM Steerable Guidewire is not intended for use in the coronary vasculature or the neuro vasculature.

ADVERSE EVENTS: Complications attributed to endovascular procedures are the following: • Vessel trauma • Vessel damage • Embolism (catheter/device, air bubble, plaque, thrombus, air embolism, thromboembolism) • Pseudoaneurysm • Seizure/stroke • Vessel dissection • Hematoma at the puncture site • Nerve injury • Infection • Perforation of the vessel • Vessel spasm • Hemorrhage • Vascular thrombosis • Vessel occlusion • Death • Bleeding • Failed treatment • Inability to position guidewire • Damage to the catheter. **92289647 A.1**

FATHOM-16 STEERABLE GUIDEWIRE

CAUTION: Federal law (USA) restricts this device to sale by or on the order of a physician. Rx only. Prior to use, please see the complete "Directions for Use" for more information on Indications, Contraindications, Warnings, Precautions, Adverse Events, and Operator's Instructions.

INTENDED USE/INDICATIONS FOR USE: The FATHOM-16 Steerable Guidewire is intended for general intravascular use in the peripheral vasculature. It can be used to selectively introduce and position catheters and other interventional devices within the peripheral vasculature. This device should be used only by physicians trained in percutaneous, intravascular techniques and procedures. **CONTRAINDICATIONS:** None known. **WARNINGS:** The FATHOM Steerable Guidewire is not intended for use in the coronary vasculature or the neuro vasculature.

ADVERSE EVENTS: Complications attributed to endovascular procedures are the following: • Vessel trauma • Vessel damage • Embolism (catheter/device, air bubble, plaque, thrombus, air embolism, thromboembolism) • Pseudoaneurysm • Seizure/stroke • Vessel dissection • Hematoma at the puncture site • Nerve injury • Infection • Perforation of the vessel • Vessel spasm • Hemorrhage • Vascular thrombosis • Vessel occlusion • Death • Bleeding • Failed treatment • Inability to position guidewire • Damage to the catheter. **92289650 A.1**

Fathom is a registered or unregistered trademark of Boston Scientific Corporation or its affiliates.



Peripheral Interventions

300 Boston Scientific Way
Marlborough, MA 01752-1234
www.bostonscientific.com

To order product or for more information contact customer service at 1.888.272.1001.

© 2021 Boston Scientific Corporation or its affiliates. All rights reserved.

PI-92202-AF