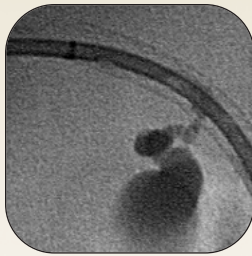


Flexima[®]

Drainage Catheters

Flexima Catheters provide the time tested difference that you can See and Feel.

Boston Scientific's line of Flexima Drainage Catheters are designed to minimize the challenges encountered with percutaneous drainage.



Ease of Introduction

Flexima Catheters are designed to facilitate ease of introduction

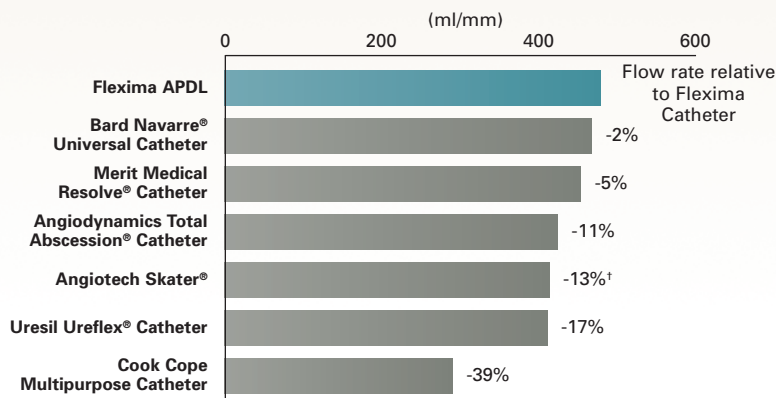
- **Glidex™** Hydrophilic Coating is intended to increase catheter lubricity to facilitate ease of insertion, and to resist encrustation
- Flexima Catheter **Firm Durometer** is engineered to resist typical buckling forces encountered during percutaneous insertion
- **R/O Marker**, on the Flexima Biliary Drainage Catheters with R/O, is intended to enhance **visibility** and **accurate placement**

Drainage Ability

Flexima Catheters are designed for excellent drainage performance

- The **locking hub and key** is designed to aid in ease of use when locking and unlocking catheter tip position and minimize suture line wicking
- Flexima Material is engineered to **resist kinking** and to preserve lumen patency
- **Large lumens and large drainage holes** are intended to minimize the likelihood of catheter occlusions, and to contribute to superior drainage performance¹

10F APD Drainage Catheter Flow Rate Results¹



N=15 unless otherwise noted.
Please note that bench testing may not be representative of clinical performance.
[†]N=10
The tests were performed to ISO standard 10555-3.

¹Bench testing on file at Boston Scientific.
Angiographic image is courtesy of Jeff Gunzenhauser, M.D.
Results from case studies are not predictive of results in other cases. Results in other cases may vary.



Patient Comfort

Three durometers of Flexima Material provide a broad selection of catheter stiffness to address ease of placement and patient comfort

- Firm, Regular, and Soft Material



Temp Tip Catheters

The smooth transition of the temp tip Flexima Catheters is engineered to facilitate introduction, and to provide an additional drainage hole when dissolved post placement.



VanSonnenberg™ Sump Catheters

Dual lumen sump catheters can be used to drain cavity content either through gravity drainage or with the application of suction.

Breadth of Line

Boston Scientific offers a full line of non-vascular drainage catheters and accessories, to provide you with a broad offering of choices

- For your convenience, Boston Scientific's drainage catheters are offered as stand alone catheters, or packaged as a kit with select non-vascular accessories

NVI Product Type	Diameters (F)	Lengths (cm)
All-Purpose Drainage	6, 7, 8, 10, 12, 14	20, 25, 30
All-Purpose Drainage Sump Catheter	12, 14	30, 35
Biliary Drainage Catheter	8, 10, 12, 14	35
Nephrostomy Catheter	8, 10, 12, 14	25
Percuflex® Nephroureteral Stent	8, 10	22, 24, 26, 28
Ureteral Stent	6, 8, 10	20, 22, 24, 26, 28
Non-Vascular Accessories	Introducer Systems, Sheaths, Fascial Dilators, Connector Tube	

Boston Scientific

Delivering what's next.™

Boston Scientific Corporation
One Boston Scientific Place
Natick, MA 01760-1537
www.bostonscientific.com

To order product or for more information, contact customer service at 1.888.272.1001.

© 2009 Boston Scientific Corporation or its affiliates. All rights reserved.

AUG09

FLEXIMA® DRAINAGE CATHETERS

CAUTION: Federal law (USA) restricts this device to sale by or on the order of a physician. Prior to use, please see the complete "Directions for Use" for more information on Indications, Contraindications, Warning, Precautions, Adverse Events, and Operator's Instructions.

INDICATIONS FOR USE: The catheter is designed for percutaneous drainage of abscess fluid, biliary, nephrostomy, urinary, pleural empyemas, lung abscesses, and mediastinal collections.

CONTRAINDICATIONS FOR USE: Where percutaneous drainage catheterization is unacceptable.

PRECAUTIONS: For single patient use only. DO NOT REUSE, REPROCESS OR RSTERILIZE. Reuse, reprocessing or resterilization may compromise the structural integrity of the device and/or lead to device failure which, in turn, may result in patient injury, illness or death.

POTENTIAL COMPLICATIONS: Potential complications includes, but are not limited to: • Pneumothorax • Catheter Occlusion • Catheter Dislodgment • Hemorrhage • Sepsis and Urinoma/Biloma • Perforation • Peritonitis • Skin infection

Studies have shown that this catheter material may cause slight irritation in some individuals.

Navarre is a registered trademark of C.R. Bard, Inc. Resolve is a registered trademark of Merit Medical. Abscession is a registered trademark of Angiodynamics. Skater is a registered trademark of PBN Medicals Denmark. Ureflex is a registered trademark of Uresil Corp.



90490829