

SpyGlass™ DS

Direct Visualization System

Boston
Scientific

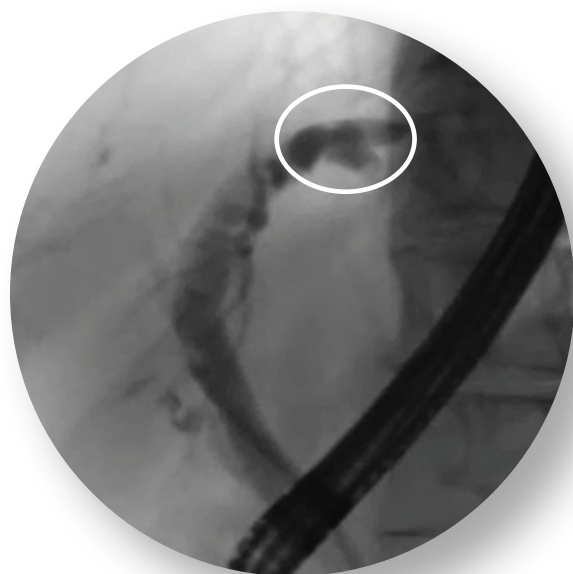
*You're going to
want to see this.™*



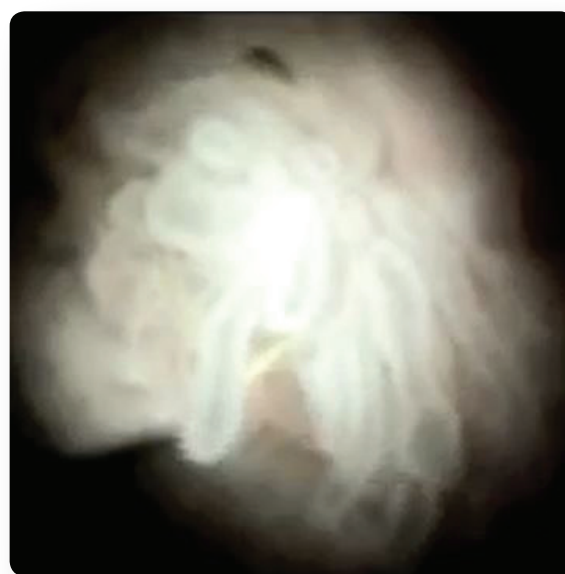
SpyScope™ DS
Access and Delivery Catheter

SpyGlass™ DS Direct Visualization System

Does reliance upon two dimensional, black and white imaging (fluoroscopy) enable the most effective way to diagnose and treat pancreaticobiliary strictures and stones?



Fluoroscopy image of
Left Hepatic Duct (LHD) villous lesion



SpyGlass™ DS System image showing
LHD villous lesion in same patient

The SpyGlass DS System allows you to realize the benefits of cholangiopancreatography as an extension of the ERCP procedure and new standard of care.

The SpyGlass System Registry* of nearly 300 patients across 15 centers demonstrated:

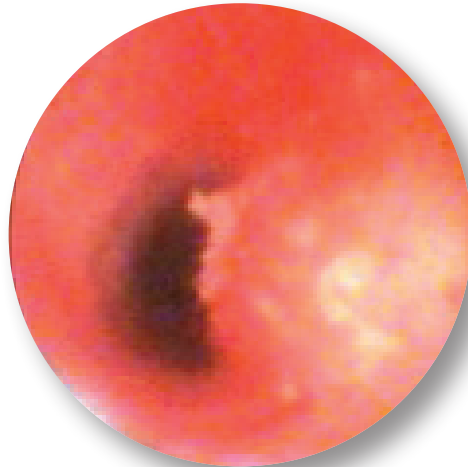
- Increased sensitivity vs standard ERCP with fluoroscopy-guided biopsy
- Altered clinical management (in 64% of the diagnostic procedures)
- High success rate for removing large or difficult stones (92%) for large or difficult stone removal

Digital + **Simple** = **DS**

Digital

Enhanced Visualization*

- **Digital sensor** with ~4x resolution
- 60% **wider field of view**
- **Automatic** light control & LED illumination
- Dedicated **irrigation** and **aspiration** connections to clear field of view



First generation
SpyGlass™ System image



SpyGlass DS System image

Simple



Improved Usability*

- **Redesigned** working channel for passing accessories
- Dedicated **irrigation** and **aspiration** channels/connections
- Fixed imager for **consistent steering**
- **Single-use** digital scope



Simplified Set-up*

- **Set-up** time **under 5 minutes**
- Equipment designed to **fit on a standard endoscopy cart**
- Automatic white **balance** and **focus**
- **Integrated digital sensor** - NO fragile optical probe to load or reprocess

Accessories

SpyBite™ Biopsy Forceps

The SpyBite Biopsy Forceps are intended to be used with the SpyScope™ DS Access and Delivery Catheter to enable **targeted specimen sampling** under **direct visualization** throughout the pancreatico-biliary system.

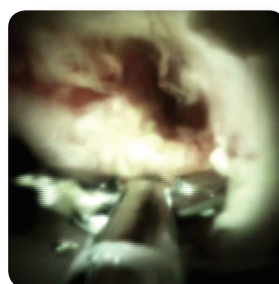
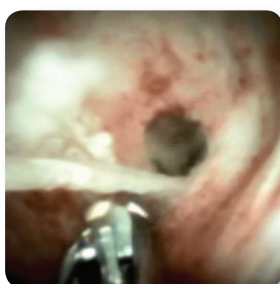
Sensitivity

Shown to be more than 1.6 times greater for targeted biopsies taken under direct visualization compared to brushing or fluoro-guided biopsy alone.²



Specifications

- 1mm outer diameter
- Biopsy cup: 4.1mm opening at 55°
- Central spike in specimen cup aids in securing samples in difficult anatomy

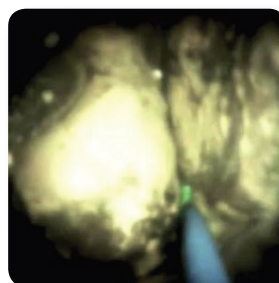


Taking biopsies under direct visualization using miniature SpyBite Forceps

EHL and Holmium Laser

Both EHL and Holmium Laser may be used in conjunction with the SpyGlass™ DS System to manage large biliary stones.

Northgate Technologies, Inc. (EHL*) and Lumenis (Laser**) have demonstrated compatibility with this system.



Fragmenting a large biliary stone using a holmium laser probe with SpyGlass DS System

Contact your local Boston Scientific representative for more information.

* Biliary EHL Probe, #9-202-3751, 1.9 Fr, 375cm
** SlimLine GITM Laser Probe, #0644-007-01, 1.8Fr

2. Diagnostic accuracy of conventional and cholangioscopy-guided sampling of indeterminate biliary lesions at the time of ERCP: a prospective, long-term follow-up study, Peter Draganov et al, GIE, Vol. 75 (2); February 2012.

Clinical Data Highlights

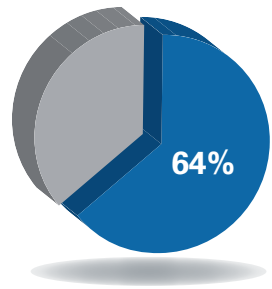
First Generation SpyGlass™ System

Since the launch of the SpyGlass Direct Visualization System in 2007, more than 50,000 procedures have been performed and over 150 articles published - further documenting its clinical significance as an extension of the ERCP procedure.

Clinical Registry

297 Patients, 15 Centers, Yang Chen, MD, et al, *GIE*, Vol. 74, 2011

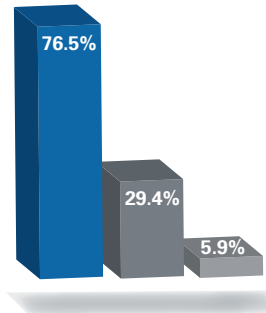
Key Results: Clinical management was altered in **64% of patients** undergoing diagnostic procedures during ERCP using cholangioscopy with the SpyGlass System.



Indeterminate Stricture Diagnosis

26 Patients, Peter Draganov, MD, et al, *GIE*, Vol. 75(2), 2012

Key Results: Demonstrated **76.5%** sensitivity using SpyBite™ Forceps performing cholangioscopy with the SpyGlass System vs **29.4%** sensitivity using blind biopsy and **5.9%** sensitivity using brushings.



Stone Management

108 Patients, Takao Itoi, MD, et al, *Digestive Endoscopy*, Vol. 22, S1, 2010

Key Results: **24% of patients** had residual stones missed on standard ERCP without cholangioscopy.

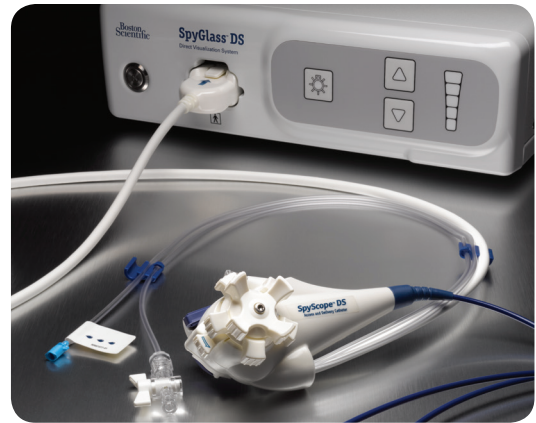
64 patients, Amit Maydeo, MD, et al, *GIE*, Vol. 74(6), 2011

Key Results: Demonstrated **83.3% stone clearance** in a single ERCP session.

Ordering Information

SpyGlass™ DS System

Order Number	Product Description
M00546650	SpyGlass DS Digital Controller
M00546600	SpyScope™ DS Access & Delivery Catheter



SpyGlass DS Accessory Devices

Order Number	Product Description	Cable Diameter	Jaw Outer Diameter	Jaw Opening	Working Length	Required Endoscope Working Channel
M00546270	SpyBite™ Biopsy Forceps	0.039" / 1.0mm	1.0mm	4.1mm / 55°	270cm	1.2mm
M00546451	Irrigation Tubing Set	–	–	–	–	–

Early Physician Feedback

I'm extremely pleased with the overall functionality of the new SpyGlass DS System. It was quick and easy to set up ('plug and play'), the image quality and stability excellent, and the four-way tip deflection intuitive. The system now enables endoscopists with ERCP expertise to perform cholangioscopy with or without intervention. My expectation is that this technology will increase our ability to diagnose and treat pancreatobiliary diseases and reduce the number of repeat ERCPs.

- Robert Hawes, MD, FASGE

*The Center for Interventional Endoscopy at Florida Hospital
Orlando, Florida*

I could potentially treat gallstone disease in that first setting and spare the patient a second procedure down the road which I think adds tremendous value to the system as well as, of course, to the patient and their family.

- Gregory Cote, MD, MS

*Medical University of South Carolina
Charleston, South Carolina*

**Boston
Scientific**
Advancing science for life™

Boston Scientific Corporation
300 Boston Scientific Way
Marlborough, MA 01752
www.bostonscientific.com

Ordering Information
1.888.272.8437

©2015 Boston Scientific Corporation
or its affiliates. All rights reserved.

ENDO-314618-AA May 2015

All trademarks are the property of their respective owners.

Indications, Contraindications, Warnings and Instructions for Use can be found in the product labeling supplied with each device.

CAUTION: Federal (USA) law restricts this device to sale by or on the order of a physician.