



**Boston  
Scientific**

Advancing science for life™



# Hydra™ Irrigation System

24-hour use\*. Consistent performance.

\* Hydra Irrigation Tubing System and Hydra Water Bottle Cap System are indicated for 24-hour use. Hydra Disposable Auxiliary Water Jet Connector is indicated for single use.



# Boston Scientific

Advancing science for life™

[Why Hydra >](#)

[Key Features >](#)

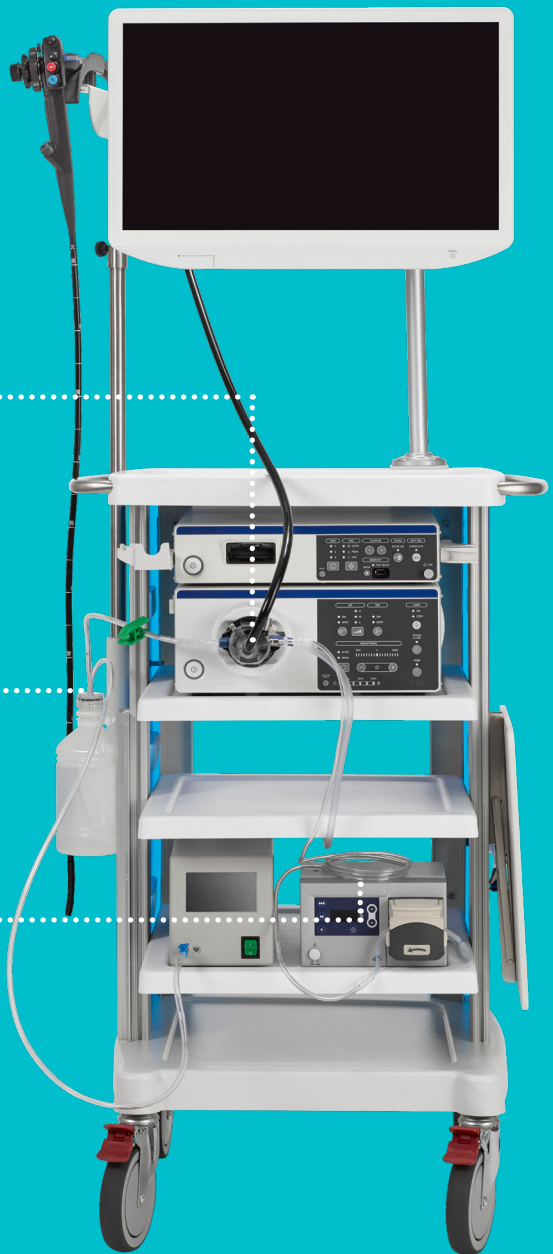
[Compatibility >](#)

[Ordering >](#)

Hydra Disposable  
Auxiliary Water Jet  
Connector

Hydra  
Water Bottle Cap  
System

Hydra Irrigation  
Tubing System



\* Hydra Irrigation Tubing System and Hydra Water Bottle Cap System are indicated for 24-hour use. Hydra Disposable Auxiliary Water Jet Connector is indicated for single use.





# Boston Scientific

Advancing science for life™



## Why Hydra™

---

### **Optimizes flow and performance**

The comprehensive Hydra Irrigation System delivers durable tubing, backflow protection and a consistent flow of sterile water to promote optimal performance during GI endoscopic procedures.

### **Minimizes cross-contamination risk**

Hydra is designed to enhance patient safety by minimizing the risks associated with cross-contamination. Intended for 24-hour use\*, the single-use product eliminates the need for reprocessing – offering a reliable alternative to reusable bottle caps and tubing.

\* Hydra Irrigation Tubing System and Hydra Water Bottle Cap System are indicated for 24-hour use. Hydra Disposable Auxiliary Water Jet Connector is indicated for single use.





# Key Features

---

## Hydra™ Water Bottle Cap System

Used with endoscopes, sterile water bottles and an air or CO<sub>2</sub> source to provide insufflation and lens cleaning during GI endoscopic procedures.



### **NEW Extended CO<sub>2</sub> Tubing**

provides sufficient length (48in) to attach to CO<sub>2</sub> insufflator



### **Air/Water Connector**

withstands multiple uses to maintain component integrity



### **Blue Markings**

indicate correct placement of pipe clamp, which keeps tubing upright to prevent water leakage



### **Stopcock with Valve Control**

seals CO<sub>2</sub> tubing to prevent air leakage

**Tubing for every endoscopy cart setup.**





# Key Features

---

## Hydra™ Irrigation Tubing System

Used with a peristaltic pump to provide a consistent flow of sterile water for high-performance irrigation.



### **Bottle Tubing Weight**

keeps tubing below water surface for consistent flow



### **Tubing Material**

designed to prevent kinking, stretching or collapsing while in use



### **Water Bottle Cap Vent**

allows airflow to enable consistent water flow through tubing



### **Blue Markings**

indicate correct placement of irrigation tubing within pump

**Innovation meets performance.**





# Key Features

---

## Hydra™ Disposable Auxiliary Water Jet Connector

Single-use device used with Hydra Irrigation Tubing System to connect to the endoscope auxiliary irrigation port for high-performance irrigation.



### Backflow Prevention Check Valve

minimizes the risk of cross-contamination to the water bottle\*



### Metal Endoscope Connector

securely attaches to auxiliary water port



### Flat-side Connector Design

enhances grip when connecting/ disconnecting from endoscope

\* The testing was performed by or on behalf of BSC. Data on file.





# Compatibility

---



## Designed to work together

The Hydra™ Irrigation System is truly a sum of its parts – connecting innovation and performance with infection prevention for GI endoscopic procedures.



## Seamless system compatibility

Hydra Irrigation Tubing System has a male luer connector for a seamless fit with the female luer of the Hydra Disposable Auxiliary Water Jet Connector. In addition, the Hydra system is compatible with:

- Commercially available sterile water bottles
- Most air and CO<sub>2</sub> insufflators
- Various peristaltic pumps





## Ordering Information

### Hydra Water Bottle Cap System (24-Hour Use)

Product Code	GTIN	Description	CO <sub>2</sub>	Air/Water Tubing Length (in)	CO <sub>2</sub> Tubing Length (in)
SCT-350-10	00816849016887	Hydra Water Bottle Cap box 10	No	16	N/A
SCT-351-10	00816849016894	Hydra Water Bottle Cap w/ CO <sub>2</sub> box 10	Yes	16	18
M00501912	00191506038892	Hydra Water Bottle Cap w/ Extended CO <sub>2</sub> box 15	Yes	16	48

### Hydra Irrigation Tubing System (24-Hour Use)

Product Code	GTIN	Description	Irrigation Pump Compatibility
SIT-355-15	00840253112200	Hydra Irrigation Tubing box 15	Olympus AFU-100, ERBE EIP 2, Steris EndoStratus & EndoGator
SIT-576-15	00840253108401	Hydra Irrigation Tubing (Olympus) box 15	Olympus OFP-2







# Ordering Information

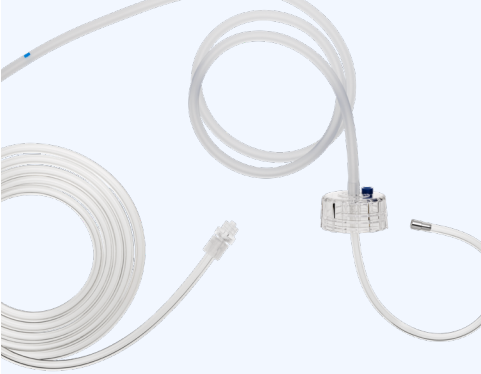
## Hydra Disposable Auxiliary Water Jet Connector (Single Use)

Product Code	GTIN	Description	Scope Compatibility
SIT-361-100	00816849016955	Hydra Disposable Auxiliary Water Jet Connector box 100	Olympus

## Suction Tubing (Single Use)

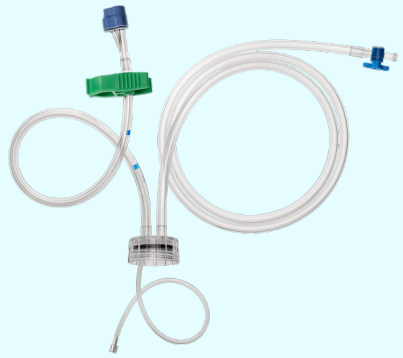
Product Code	GTIN	Description	Quantity	Diameter	Length
SVT-089-100	00816849016788	Suction Tubing, Non-Sterile	Box 100	3/16 in	6 ft
SVT-090-100	00816849016795	Suction Tubing, Non-Sterile	Box 100	3/16 in	10 ft
SVT-095-100	00816849016801	Suction Tubing, Non-Sterile	Box 100	3/16 in	12 ft
SVT-143-100	00816849016818	Suction Tubing, Non-Sterile	Box 100	1/4 in	6 ft
SVT-144-60	00816849016825	Suction Tubing, Non-Sterile	Box 60	1/4 in	10 ft
SVT-145-50	00816849016832	Suction Tubing, Non-Sterile	Box 50	1/4 in	12 ft



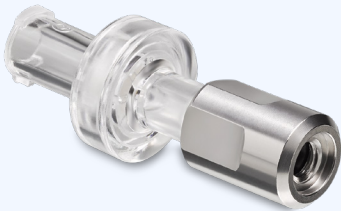


## Hydra Irrigation Tubing System

## Hydra Water Bottle Cap System



## Hydra Disposable Auxiliary Water Jet Connector



All photography owned by Boston Scientific unless otherwise noted.

All trademarks are the property of their respective owners.

Indications, Contraindications, Warnings and Instructions for Use can be found in the product label supplied with each device.

CAUTION: U.S. Federal law restricts this device to sale by or on the order of a physician.

2024 Copyright © Boston Scientific Corporation or its affiliates

All rights reserved.

ENDO-1907609-AB

