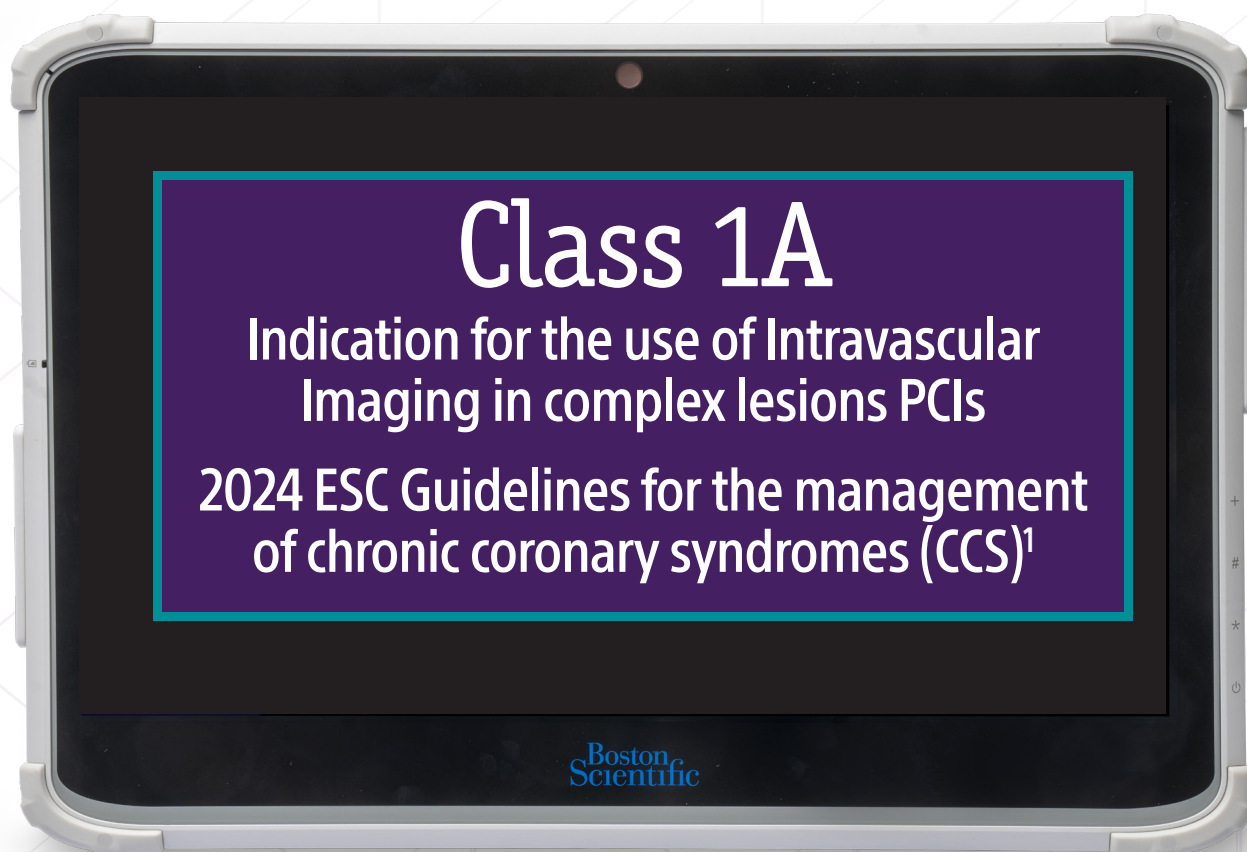




The ESC guidelines have changed



Highest level of guidelines recommendation for IVUS or OCT-guidance of PCI on anatomically complex lesions, **particularly Left Main stem, true bifurcations and long lesions.**



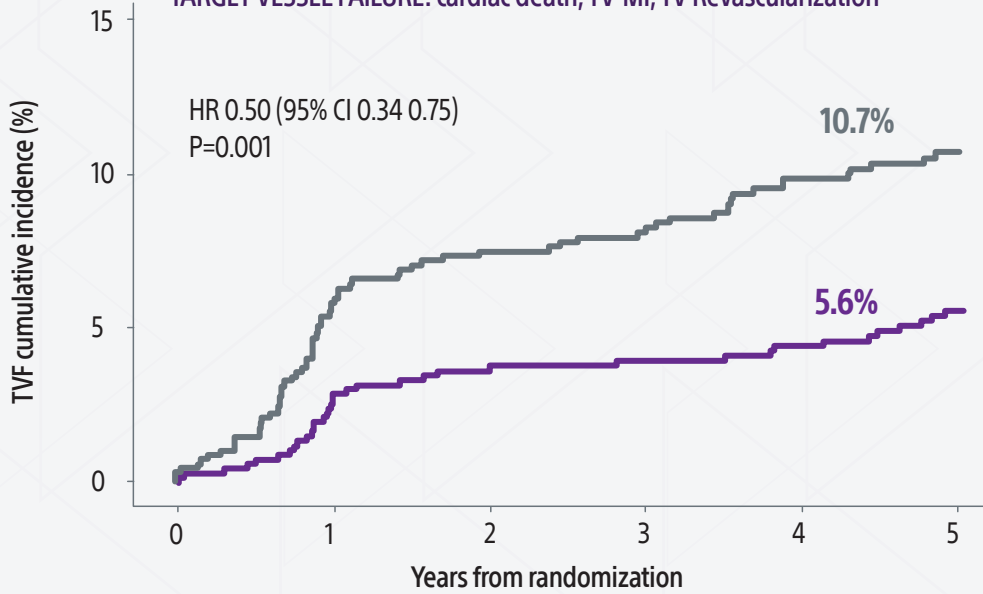
Backed-up by **several clinical studies** in the recent years such as RENOVAE-Complex PCI² (complex lesions), IVUS-XPL³ (long lesions) and OCTOBER⁴ (true bifurcations).



This guidelines update¹, and the strong clinical evidence reaffirm that Intravascular Imaging is **safer and more effective**²⁻⁴ for the guidance of PCI **compared to angio guidance alone.**

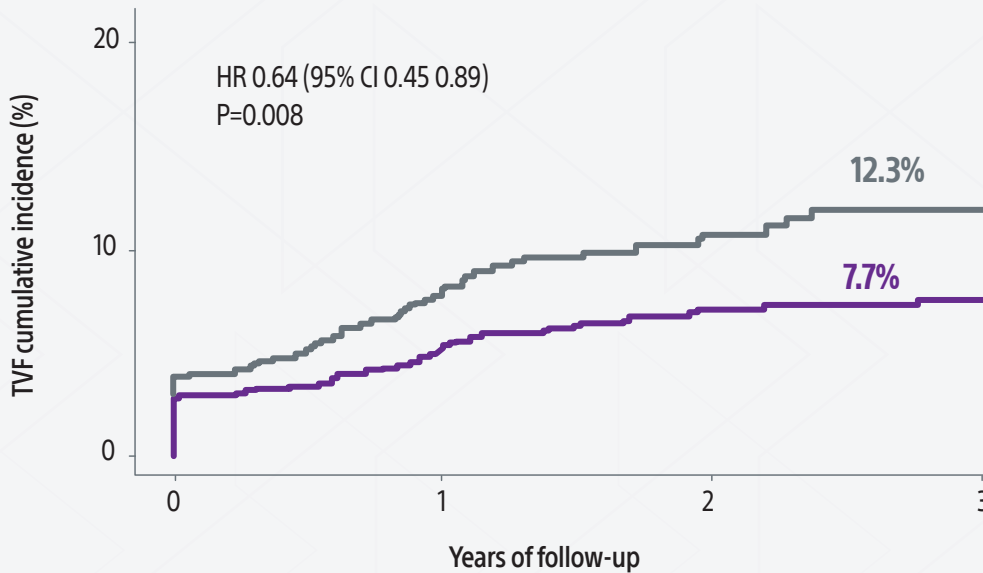
IVUS-XPL³ (n=1400) Long lesions (>28mm)

TARGET VESSEL FAILURE: cardiac death, TV-MI, TV Revascularization



RENOVATE-COMPLEX-PCI² (n=1639) Complex Lesions

TARGET VESSEL FAILURE: cardiac death, TV-MI, TV Revascularization



— Angiography-guided PCI
— Imaging-guided PCI

Boston Scientific
Advancing science for life™

Interventional Cardiology
300 Boston Scientific Way
Marlborough, MA 01752-1234
www.bostonscientific.com

To order product or for more information
contact customer service at 1.888.272.1001.

© 2024 Boston Scientific Corporation
or its affiliates. All rights reserved.

IC-1984308-AA

1. Vrints C, et al. *European Heart Journal*(2024) 00, 1-123 <https://doi.org/10.1093/eurheartj/ehae177>.
2. Lee et al, *N Engl J Med* 2023;388:1668-1679.
3. Hong, SJ, et al. *JAMA* 314.20 (2015): 2155-2163.
4. Holm et al. *N Engl J Med* 2023;389:1477-1487.