



**Products for
Pulmonary Endoscopy**



Pulmonary Endoscopy

To deliver high-quality patient care, you need a partner that provides innovative technologies, robust clinical and economic evidence, education, reimbursement support, and a portfolio of services. We are committed to working with you to pursue meaningful innovation, develop technologies, and provide support that offers greater value and makes a difference in the lives of your patients.



When we challenge
conventional thinking,
We advance
the standard of care.

EBUS DEVICES .01

Expect™ Pulmonary

Endobronchial Ultrasound Transbronchial Aspiration Needle

Acquire™

Pulmonary Fine Need Biopsy (FNB) Device

CoreDX™

Pulmonary Mini-Forceps

SINGLE-USE BRONCHOSCOPE .02

EXALT™ Model B

Single-Use Bronchoscope

PERIPHERAL BRONCHOSCOPY .03

iNod™ | Ultrasound Guidance

Single-Use Bronchoscopic Device

PULMONARY DEVICES .04

Expect™ Pulmonary

Endobronchial Ultrasound Transbronchial Aspiration Needle

Acquire™

Pulmonary Fine Need Biopsy (FNB) Device

CoreDX™

Pulmonary Mini-Forceps

Zero Tip™

Single-Use Airway Retrieval Basket

Rescue™ Pulmonary Grasping Forceps

Pulmonary Compliance BronchKit

Single-Use Bronchoscope Reprocessing Kit

STENTS & DILATION .05

CRE™

Pulmonary Balloon Dilator

Ultraflex™

Tracheobronchial Stent System

Expect™ Pulmonary

Endobronchial Ultrasound Transbronchial Aspiration Needle

The Expect Pulmonary Ultrasound Transbronchial Aspiration Needle is designed to be used with endobronchial ultrasound endoscopes for ultrasound-guided fine needle aspiration of the submucosal and extramural lesions of the tracheobronchial tree and the gastrointestinal tract.

Reliability

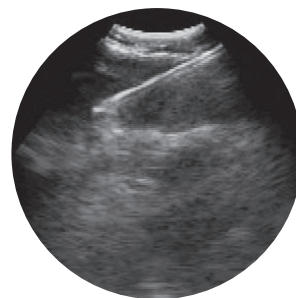
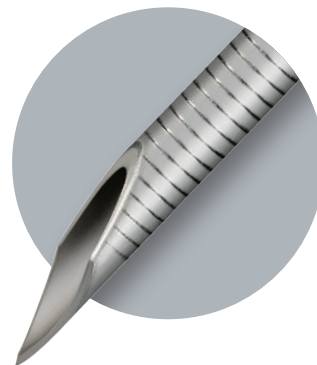
- Sharp needle tip grind is designed for precise penetration into the target area. Testing shows no deterioration in sample quality throughout a procedure.¹

Durability

- Cobalt chromium needle provides benefits over some stainless steel alloys including greater needle hardness and excellent tensile properties to deliver:
 - Superior needle penetration²
 - Improved pushability and kink resistance²
 - Increased resistance to needle damage or deformation after multiple passes²
 - Thin wall of needle maximizing inner diameter for improved sample collection

Highly Visible Echogenic Pattern

- Extends onto needle tip to help provide precise guidance within the target site
- Helps to maintain needle tip visibility at all times during a procedure



¹Data on file.

²Catheter and Specialty Needle Alloys, an abstract from Materials & Processes for Medical Devices Conference & Exposition, Minneapolis, MN, August 10-12, 2009. Ultrasound and pathology images courtesy of Dr. Septimiu Murgu

Expect™ Pulmonary

Endobronchial Ultrasound Transbronchial Aspiration Needle

Olympus Scope Compatible

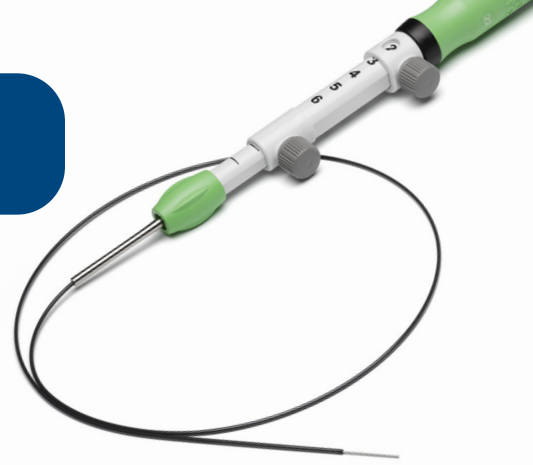
Order Number	GTIN	Needle Size	Minimum Working Channel (mm)	Sheath Outer Diameter (mm)	Units
M005 58220	08714729861409	Expect Pulmonary 22Ga – Olympus Scope Compatible	2.0	1.6	Each
M005 58250	08714729861416	Expect Pulmonary 25Ga – Olympus Scope Compatible	2.0	1.4	Each
M005 58731	08714729893189	Expect Pulmonary Needle Adaptor – Olympus Scope Compatible	N/A	N/A	Box 10

Indications, Contraindications, Warnings and Instructions for Use can be found in the product labeling supplied with each device.
CAUTION: Federal (USA) law restricts this device to sale by or on the order of a physician.

Acquire™ FNB

Pulmonary Fine Needle Biopsy (FNB) Device

The Acquire Pulmonary EBUS-FNB Device is designed to be used with EBUS scopes for fine needle biopsy of submucosal and extramural lesions of the tracheobronchial tree and the gastrointestinal tract.



FNB of lung lesions may be performed during EBUS procedures when the tip design of a traditional Fine Needle Aspiration (FNA) needle is not optimal. Examples include, but are not limited to, lung cancer staging and diagnosis, and suspected lymphoma or sarcoidosis.

Franseen tip is designed to capture bigger tissue specimens

- Three points provide stability at puncture
- Three symmetrical cutting surfaces with fully formed heels maximize tissue capture and minimize fragmentation

Histopathological Core Samples

- For 20x more tissue than same gauge FNA needle¹

Based on use of the Acquire needle in gastrointestinal procedures.



1. Temnykh, Lindsey M. et al. An exclusive fine needle biopsy approach to sampling solid lesions under EUS guidance: a case controlled study. *Gastrointestinal Endoscopy*. 2018; 87(6); AB427 - AB428.

Acquire

Pulmonary Fine Needle Biopsy (FNB) Device

Acquire Pulmonary Endobronchial Ultrasound Fine Needle Biopsy Device

Order Number	GTIN	Product Description	Minimum Working Channel (mm)	Sheath O.D. (mm)	Units
M00552350	08714729986225	Acquire Pulmonary 22Ga – Olympus Scope Compatible	2.0	1.4	Each
M00552400	08714729986249	Acquire Pulmonary 25Ga – Olympus Scope Compatible	2.0	1.4	Each
M00558731	0871472983189	Expect Pulmonary Needle Adaptor – Olympus Scope Compatible			Box 10

Indications, Contraindications, Warnings and Instructions for Use can be found in the product labeling supplied with each device.

CAUTION: Federal (USA) law restricts this device to sale by or on the order of a physician.

CoreDX™

Pulmonary Mini-Forceps

CoreDx is designed for intranodal histologic sample collection—a complementary tool for EBUS procedures.

Histopathological Core Samples

- For molecular analysis and diagnosis of sarcoidosis and lymphoma

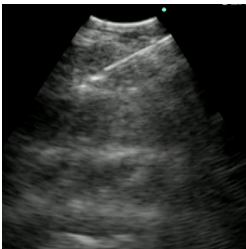
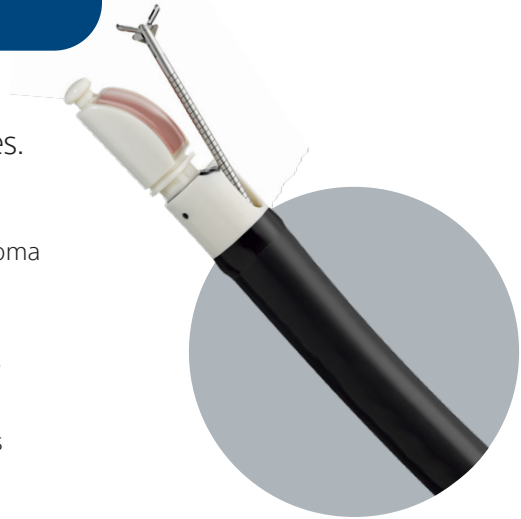
Flexibility & Column Strength

- CoreDx is designed with flexibility to allow access to all regions within the transbronchial tree
- High Column Strength* allows for ease of entry through access hole when used in conjunction with EBUS-TBNA

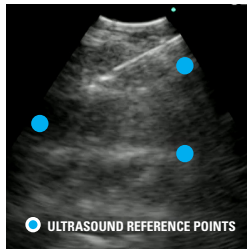
* BSC Data on file

Scope Compatibility

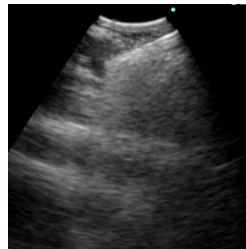
- CoreDx is compatible with all currently available EBUS scopes (Olympus, Pentax, and Fuji)
- Compatible with super slim bronchoscope (1.2mm working channel)



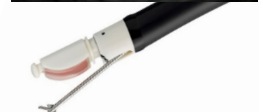
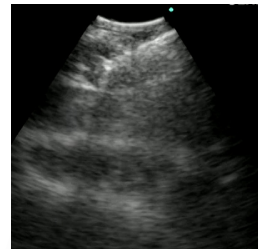
Following a standard EBUS procedure, CoreDx is used as an adjunctive technique to obtain histologic samples.



When using in conjunction with EBUS, take note of the needle alignment on the ultrasound image and choose reference points to help maintain the scope position during instrument exchange.



With CoreDx at the end of the working channel, align the ultrasound image to your reference points. Then using short deliberate strokes advance the forceps to the location of planned biopsy.



Open jaws carefully under ultrasound visualization. Move forceps forward against the tissue to be sampled and close jaws. Slowly withdraw forceps keeping jaws closed.

CoreDX

Pulmonary Mini-Forceps

CoreDx Pulmonary Mini-Forceps

Order Number	GTIN	Product Description	Minimum Working Channel (mm)	Sheath Length (mm)	Units
M00515220	08714729971054	Pulmonary mini-forceps	1.2	130	Each

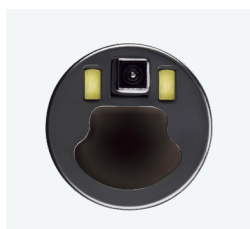
Indications, Contraindications, Warnings and Instructions for Use can be found in the product labeling supplied with each device. CAUTION: Federal (USA) law restricts this device to sale by or on the order of a physician.

EXALT™ Model B

Single-Use Bronchoscope

The EXALT Model B Single-Use Bronchoscope is intended for use with the EXALT Monitor for endoscopic procedures within the airways and tracheobronchial

Designed with suction in mind for a wide array of bedside procedures, EXALT Model B features superior suction capabilities, high-quality visualization¹, and clinician-preferred ergonomics², all with the benefits of single-use.



Superior Suction Capability:

Superior suction power in water when compared to all tested commercially available single-use and reusable bronchoscopes of comparable sizes.³

High-Quality Visualization¹:

Features dynamic light control and bright LEDs designed to produce high quality images.

Familiar Design:

Designed to mimic the form and function of a reusable scope.

Sterile, Single-Use:

EXALT Model B is sterilized and intended for single-use, eliminating the risk of cross-contamination due to ineffective reprocessing.

Patient care demands a single-use bronchoscope with superior suction³

Model B outperforms tested disposable bronchoscopes with superior suction power – a critical factor in helping keep airways clear while getting procedures done.

EXALT Model B

Single-Use Bronchoscope

EXALT Model B Single-Use Bronchoscope

Order Number	Product Description	Units
M00542760	EXALT Monitor (mount included)	Each
M00542780	EXALT Monitor (no mount included)	Each
M00542820	EXALT Monitor mount	Each
M00542751	EXALT Model B single-use bronchoscope – Large	Box 5
M00542731	EXALT Model B single-use bronchoscope – Regular	Box 5
M00542711	EXALT Model B single-use bronchoscope – Slim	Box 5

Indications, Contraindications, Warnings and Instructions for Use can be found in the product labeling supplied with each device.

CAUTION: Federal (USA) law restricts this device to sale by or on the order of a physician.

1. Lamb, C.R., Yavarovich, E., Kang, V. et al. Performance of a new single-use bronchoscope versus a marketed single-use comparator: a bench study. *BMC Pulm Med* 22, 189 (2022). <https://doi.org/10.1186/s12890-022-01982-4>

2. Data on file – In simulated use evaluations, 15 physicians evaluated EXALT Model B and rated navigation as “clinically preferred” over other commercially available single-use bronchoscopes.

3. Data on file – Boston Scientific benchtop study testing 15 units each of 9 single-use scope models, and 1 each of 4 reusable scope models (each tested 15 times with a new suction valve) under constant pressure for 30 seconds testing two different viscosity substances. The volume of substance suctioned via the bronchoscope was the primary outcome. One-way ANOVA was used to test statistical significance between scopes with an alpha of 0.05. Bench test results may not necessarily be indicative of clinical performance.

iNod™ | Ultrasound Guidance System

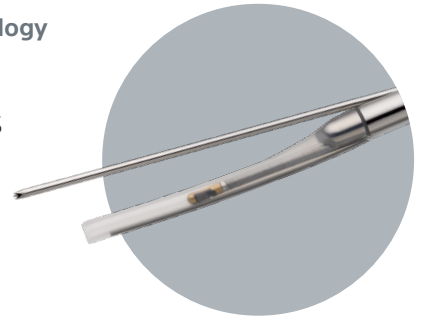
Peripheral Bronchoscopy

The iNod™ | Ultrasound Guidance System offers real-time visualization of peripheral nodule biopsies using the iNod™ | Ultrasound Guided Biopsy Needle and the iNod™ | Ultrasound Guidance Console.

iNod™ | Ultrasound Guided Biopsy Needle

Single-use device backed by proven Boston Scientific needle technology

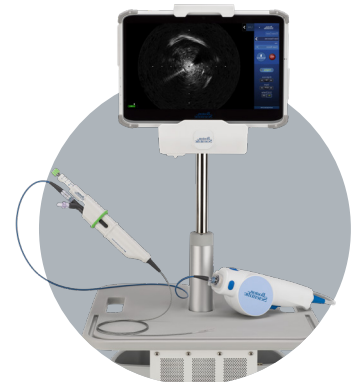
- Acquire™ needle biopsy device with Franseen tip design
 - Offers an internal diameter (ID) that matches the 25G Acquire™ EBUS with up to 2.5cm needle extension
- 30MHz R-EBUS transducer with needle indicator
 - Provides technology to help physicians visualize peripheral nodules
- 11-deg needle ramp with braided rotatable shaft
 - Enables real-time repositioning of needle to target both concentric and eccentric lesions
- 117mm working length
 - Designed for use with 2mm working channels, including EM navigation and robotic bronchoscopy



iNod™ | Ultrasound Guidance Console

Mobile system with a footprint designed to help fit any procedure suite

- Real-time radial ultrasound
 - Generates and processes ultrasound signal to create a composite image of nodule cross-section
- Tablet-based user interface
 - Allows physicians to view and interact with images and measure lesion diameter
- Software plus HDMI output
 - Enables a streamlined workflow by integrating with procedure rooms and connecting to PACS and worklist servers



iNod™ | Ultrasound Guidance System

Peripheral Bronchoscopy

iNod™ | Ultrasound Guidance System

Order Number	GTIN	Product Description	Packaging
M00502060	00191506020729	iNod™ Ultrasound Guided Biopsy Needle	Box 1
M00503210	00191506020910	iNod™ Ultrasound Guidance Console	Box 1

Indications, Contraindications, Warnings and Instructions for Use can be found in the product labeling supplied with each device.

CAUTION: Federal (USA) law restricts this device to sale by or on the order of a physician.

[Back to Contents](#)

Radial Jaw™ 4

Single-Use Pulmonary Biopsy Forceps

The Radial Jaw 4 Pulmonary Biopsy Forceps are intended to collect tissue endoscopically for histologic examination.

Surgical Stainless Steel Jaw with Improved Micromesh Teeth

Designed to Provide:

- Tissue specimens for excellent sample handling and preparation
- Clean, precise bite for accurate histological diagnosis

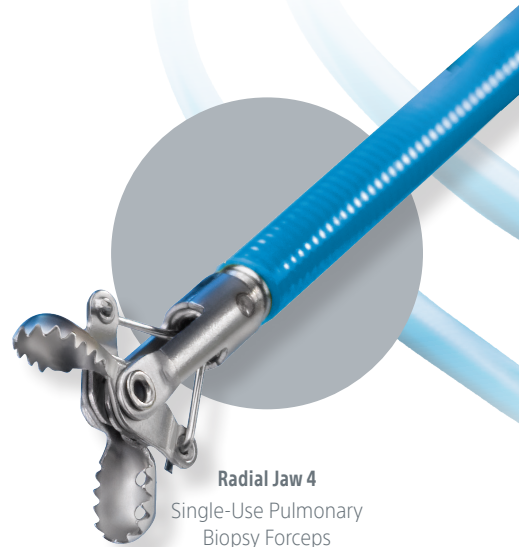
Streamlined Catheter

Designed to Provide:

- Enhanced passability through tortuous anatomy
- The right balance of columnar strength and flexibility for excellent pushability and control during scope passage

Single-Use

- Eliminates the risk of transmitting patient-to-patient disease



Radial Jaw 4
Single-Use Pulmonary
Biopsy Forceps

Radial Jaw 4 Pulmonary

Single-Use Biopsy Forceps

Radial Jaw 4 Single-Use Pulmonary Biopsy Forceps

Order Number	GTIN	Product Description	Differentiator	Jaw OD (mm)	Working Length (cm)	Minimum Working Channel (mm)	Units
M00515181	08714729792864	Single Use Biopsy Forceps	Pulmonary Standard Capacity	1.8	100	2.0	Box 5
M00515182	08714729799337	Single Use Biopsy Forceps	Pulmonary Standard Capacity	1.8	100	2.0	Box 20
M00515191	08714729792871	Single Use Biopsy Forceps	Pulmonary Standard Capacity w/ Needle	1.8	100	2.0	Box 5
M00515192	08714729818083	Single Use Biopsy Forceps	Pulmonary Standard Capacity w/ Needle	1.8	100	2.0	Box 20
M00515201	08714729793281	Single Use Biopsy Forceps	Pulmonary Large Capacity	2.2	100	2.8	Box 5
M00515202	08714729818076	Single Use Biopsy Forceps	Pulmonary Large Capacity	2.2	100	2.8	Box 20

Indications, Contraindications, Warnings and Instructions for Use can be found in the product labeling supplied with each device.
CAUTION: Federal (USA) law restricts this device to sale by or on the order of a physician.

Celebrity™

Single-Use Cytology Brush

The Celebrity Cytology Brush is indicated for acquiring tissue samples used for the diagnosis of suspected pathology in the airway tree.

PTFE Sheath

- ▶ Designed to help reduce friction, facilitating passage through the scope

Stainless Steel Wire Shaft

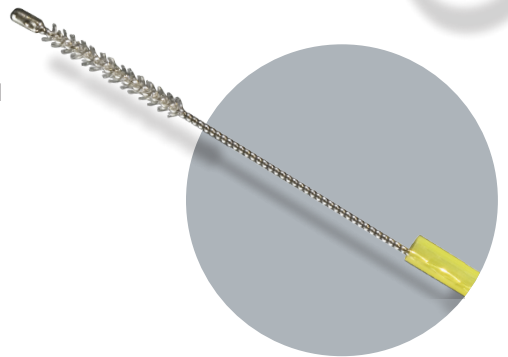
- ▶ Intended to provide strength to help resist kinking or bending during advancement

Bullet-Shaped Tip

- ▶ Designed to help reduce tissue trauma

Ergonomic Handle

- ▶ Ergonomic handle with automatic stop
- ▶ Facilitates single-hand brush advancement and withdrawal
- ▶ Helps reduce the risk of overwithdrawal and subsequent kinking of proximal shaft



Celebrity

Single-Use Cytology Brushes

Celebrity Single-Use Cytology Brushes

Order Number	GTIN	Product Description	Required Working Channel (mm)	Bristle O.D. (mm)	Sheath Length (cm)	Units
M00516001	08714729138983	Cytology Brushes	2.0	1.0	140	Box 10
M00516011	08714729138990	Cytology Brushes	2.0	1.5	140	Box 10
M00516071	08714729139089	Cytology Brushes	2.0	1.9	100	Box 10
M00516151	08714729014003	Cytology Brushes	2.0	1.9	150	Box 10

Indications, Contraindications, Warnings and Instructions for Use can be found in the product labeling supplied with each device.
CAUTION: Federal (USA) law restricts this device to sale by or on the order of a physician.

eXcelon™

Single-Use Transbronchial Aspiration Needle

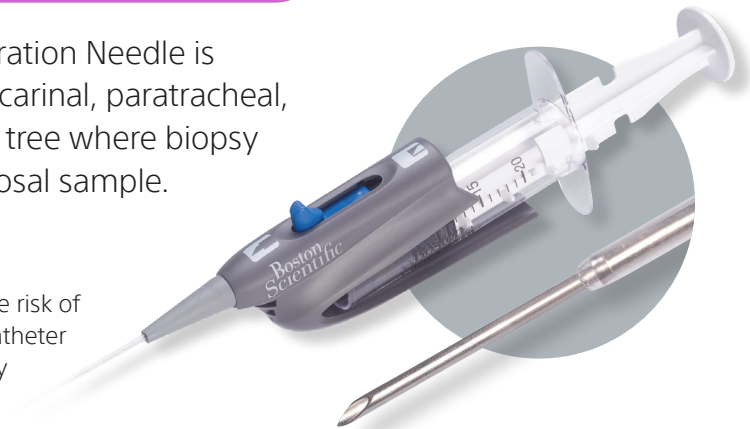
The eXcelon Transbronchial Aspiration Needle is indicated for use in aspiration in carinal, paratracheal, and hilar lesions of the bronchial tree where biopsy forceps cannot obtain a submucosal sample.

Procedural Safety Features

- ▶ Button lock system is designed to reduce risk of accidental needle deployment during catheter advancement, potentially avoiding costly scope damage
- ▶ Fused distal coil and needle configuration is designed to help prevent needle detachment
- ▶ Clear catheter designed for visualization if blood is drawn during aspiration

High Performance Design

- ▶ "X-Catheter" is engineered to promote responsiveness and kink resistance for smooth needle penetration
- ▶ Distal coil is designed to promote tip flexibility while maintaining rigidity at the proximal end
- ▶ Needle internal volume is designed to provide increased space for specimen collection



X-Catheter Design

eXcelon

Single-Use Transbronchial Aspiration Needle

eXcelon Single-Use Transbronchial Aspiration Needle

**Needle packaged with 20cc Syringe*

Order Number	GTIN	Product Description*	Needle Gauge	Needle Length (mm)	Catheter Length (cm)	Sheath O.D. (mm)	Units
M00564101	08714729456452	Transbronchial Aspiration Needle	19	15	130	1.8	Box 5
M00564111	08714729456469	Transbronchial Aspiration Needle	20	15	130	1.8	Box 5
M00564121	08714729456476	Transbronchial Aspiration Needle	21	15	130	1.8	Box 5

Indications, Contraindications, Warnings and Instructions for Use can be found in the product labeling supplied with each device.
CAUTION: Federal (USA) law restricts this device to sale by or on the order of a physician.

Zero Tip™ Basket

Single-Use Airway Retrieval Basket

The Zero Tip Airway Retrieval Basket is indicated to be used to endoscopically remove foreign bodies in the airway.

Access

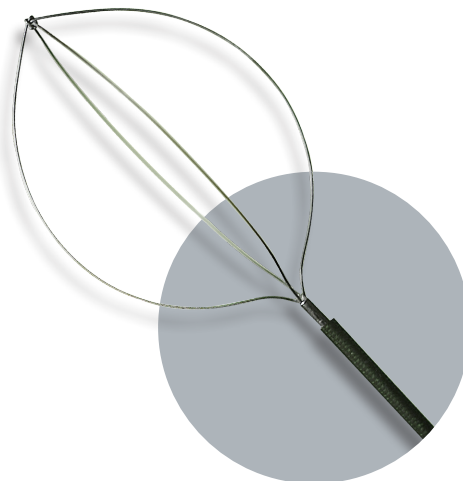
- Designed for access to the upper lobes where rigid bronchoscopy may be insufficient

Low-Profile Tip Design

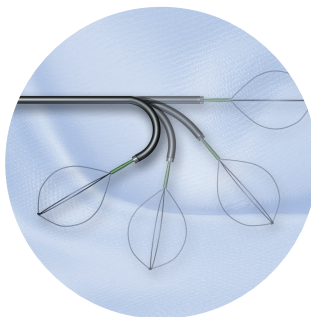
- Flattened distal surface of the basket designed to reduce tissue-to-tip interface for smooth manipulation
- Knotted basket tip designed to help prevent wire movement for more reliable foreign body capture
- Low-profile basket wire configuration facilitates proximity to foreign body, enhancing retrieval

Advanced Construction

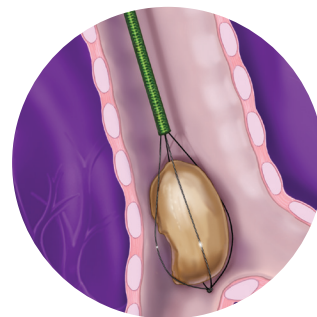
- Nitinol wire construction designed to offer a kink-resistant, flexible wire for scope deflection
- Low-friction sheath designed for smooth scope passage
- Multi-layer sheath is designed to enhance pushability, while maintaining flexibility for enhanced scope deflection



Zero Tip
Airway Retrieval Basket



Nitinol wire
construction for enhanced
scope deflection.



Engineered for foreign
body retrieval, even in the
upper lobes.

Zero Tip Basket

Single-Use Airway Retrieval Basket

Zero Tip Single-Use Airway Retrieval Basket

Order Number	GTIN	Product Description	O.D. (mm)	Sheath Length (cm)	Working Opening (mm)	Basket Sheath Material	Units
M00513200	08714729414995	Zero Tip Airway Retrieval Basket	0.8	120	12	Polyimide / PTFE	Each
M00513210	08714729415008	Zero Tip Airway Retrieval Basket	1.0	120	16	Polyimide / PTFE	Each

Indications, Contraindications, Warnings and Instructions for Use can be found in the product labeling supplied with each device.
CAUTION: Federal (USA) law restricts this device to sale by or on the order of a physician.

[Back to Contents](#)

Rescue™ Pulmonary Grasping Forceps

The Rescue Pulmonary Grasping Forceps are intended to be used to retrieve foreign body and/or excised tissue endoscopically within the upper airways and tracheobronchial tree.

- Rat tooth shaped jaw designed for secure and strong grasp of intended object
- Insulated sheath – designed to be atraumatic while maintaining passability and flexibility



Rescue™ Pulmonary Grasping Forceps

Bronchoscopy, rigid or flexible, including fluoroscopic guidance, when performed; with removal of foreign body

Rescue™ Pulmonary Grasping Forceps

Order Number	GTIN	Product Description	Maximum Insertion Portion Diameter (mm)	Working Length (cm)	Minimum Bronchoscope Channel Size (mm)	Jaw Opening Width (mm)	Units
M00515101	26948318968828	Rescue Pulmonary Grasping Forceps	1.8	120	2.0	4.5	Box 5

Indications, Contraindications, Warnings and Instructions for Use can be found in the product labeling supplied with each device.
CAUTION: Federal (USA) law restricts this device to sale by or on the order of a physician.

1. CPT Copyright 2020 American Medical Association. All rights reserved. CPT is a registered trademark of the American Medical Association. Applicable FARS/DFARS Restrictions Apply to Government Use. Fee schedules, relative value units, conversion factors and/or related components are not assigned by the AMA, are not part of CPT, and the AMA is not recommending their use. The AMA does not directly or indirectly practice medicine or dispense medical services. The AMA assumes no liability for data contained or not contained herein.

Pulmonary Compliance BronchKit

Single-Use Bronchoscope Reprocessing Kit

The Boston Scientific Infection Prevention portfolio of products is designed to provide the components needed to comply with industry guidelines, mitigate cross-contamination risk, and reduce variability during bronchoscope reprocessing.



Pulmonary Compliance BronchKit

Single-Use Bronchoscope Reprocessing Kit

Single-Use Bronchoscope Reprocessing Kit

Name Item #	Compliance BronchKit Standard CBK-881-20	Compliance BronchKit Premium CBK-882-20
CinchPad™ Endoscope transport pad	✓	✓
Gauze , 4X4, 4-ply, Non-Woven	✓	✓
SafeStart™ bedside cleaning kit	✓	✓
Biohazard Label	✓	✓
HedgeHog™ Double Bundle Cleaning Brush	✓	✓
20ml Syringe	✓	✓
EndoArmor™ Plus Gown	✓	✓
Suction Tubing .25" x 10'		✓

Indications, Contraindications, Warnings and Instructions for Use can be found in the product labeling supplied with each device.
CAUTION: Federal (USA) law restricts this device to sale by or on the order of a physician.

[Back to Contents](#)



CRE Pulmonary Balloon Dilatation Catheter

The CRE Pulmonary Balloon Dilatation Catheter is intended to be used to endoscopically dilate strictures of the airway tree.

Three-in-One Technology

- Designed for successive, gradual dilation of strictures
- Helps eliminate the need for multiple balloons to employ multi-size dilation therapy

First Balloon Indicated for the Airway

- Indicated for airway stricture management

High Degree of Radial Vector Force

- Promotes low stricture compliance with little or no balloon waisting

0.035" Guidewire Compatible

- Designed for use with 0.035" guidewires, such as Jagwire™ Pulmonary Guidewires

Rectilinear Shoulder Design

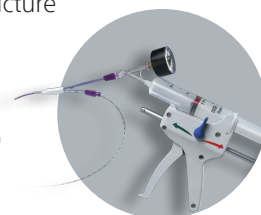
- Engineered to help promote endoscopic visualization
- Designed to provide greater usable balloon surface area during dilation

Radiopaque Markers

- Designed to facilitate fluoroscopic guidance of balloon positioning within a stricture

Inflation and Deflation

- Compatible with the Alliance™ II Inflation System or CRE SteriFlate™ Disposable Inflation Device
- Designed for rapid inflation and deflation when used with the Alliance II Inflation System or SteriFlate Disposable Inflation Device



Alliance™ II Inflation System

CRE

Single-Use Pulmonary Balloon Dilator

CRE Pulmonary Balloon Dilators

Order Number	GTIN	Diameter at 3 ATM	Diameter (mm) at Intermediate Pressure	Diameter (mm) at Maximum	Balloon Length (cm)	Catheter Length (cm)	Units
M00550300	08714729456186	12	13.5 @ 4.5 atm	15 @ 8 atm	5.5	110	Each
M00550310	08714729456193	15	16.5 @ 4.5 atm	18 @ 7 atm	5.5	110	Each
M00550320	08714729456209	18	19 @ 4.5 atm	20 @ 6 atm	5.5	110	Each
M00550330	08714729456216	8	9 @ 5.5 atm	10 @ 9 atm	3.0	110	Each
M00550340	08714729456223	10	11 @ 5 atm	12 @ 8 atm	3.0	110	Each
M00550350	08714729456230	12	13.5 @ 4.5 atm	15 @ 8 atm	3.0	110	Each

Inflation/Deflation Devices and Accessories

Alliance II Inflation System

Order Number	GTIN	Product Description	Units
M00550620	08714729283881	Inflation Handle	Each
M00550601	08714729129332	Single-Use Syringe/ Gauge Assembly	Box 5

CRE SteriFlate Disposable Inflation Device

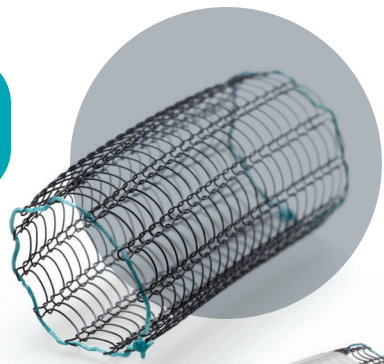
Order Number	GTIN	Description	Units
M00550630	00856877002506	CRE SteriFlate Disposable Inflation Device	Each

Indications, Contraindications, Warnings and Instructions for Use can be found in the product labeling supplied with each device.

CAUTION: Federal (USA) law restricts this device to sale by or on the order of a physician.

Ultraflex™

Tracheobronchial Stent System



Ultraflex
Tracheobronchial
Uncovered and Covered Stent System

The Ultraflex Tracheobronchial Stent System is provided sterile in both covered and uncovered versions and is indicated for use in the treatment of tracheobronchial strictures produced by malignant neoplasms.

The Ultraflex Tracheobronchial Stent System is Designed to Address the Following Clinical Needs:

Accommodate Varying Airway Anatomy without Kinking

Knitted Nitinol Design

- Stent geometry is designed to adapt to anatomical contours and exert constant, radial pressure to maintain patency

Clear Secretions

Flexible Open Loop Design

- Epithelization of uncovered stent may promote mucociliary clearance

Resist Migration

Uncovered Ends

- Epithelization of ends may limit migration

Resist Tumor Ingrowth

Silicone Covering

- Covering helps resist tumor growth

Ultraflex

Tracheobronchial Stent System

Ultraflex Tracheobronchial Partially Covered Stent System

Order Number	GTIN	Expanded Stent O.D. (mm)	Expanded Stent Length (mm)	Compressed Stent		Cover Length (mm)	Tip Max O.D. (mm)	Packaging
				Delivery System O.D. (mm)				
M00576520	8714729842323	8	40	7		25	4.1	Each
M00576530	8714729842330	10	30	7		15	4.1	Each
M00576540	8714729842347	10	40	7		25	4.1	Each
M00576550	8714729842354	12	30	7		15	4.1	Each
M00576560	8714729842361	12	40	7		25	4.1	Each
M00576570	8714729842378	14	30	9		15	4.1	Each
M00576580	8714729842385	14	40	9		25	4.1	Each
M00576590	8714729842392	14	60	9		45	4.1	Each
M00576600	8714729842408	14	80	9		65	4.1	Each
M00576610	8714729842415	16	40	9		25	5.3	Each
M00576620	8714729842422	16	60	9		45	5.3	Each
M00576630	8714729842439	16	80	9		65	5.3	Each
M00576640	8714729842446	18	40	11		25	5.3	Each
M00576650	8714729842453	18	60	11		45	5.3	Each
M00576660	8714729842460	18	80	11		65	5.3	Each
M00576670	8714729842477	20	40	11		25	5.3	Each
M00576680	8714729842484	20	60	11		45	5.3	Each
M00576690	8714729842491	20	80	11		65	5.3	Each

Amplatz Super Stiff™ Guidewire

Order Number	GTIN	Description	OD (in)	Length (mm)	Tip Style	Packaging
M00550090	08714729301929	Amplatz Super Stiff Guidewire	.038	260	Straight	Each

Jagwire™ Single-Use Pulmonary Guidewire

Order Number	GTIN	O.D. (in)	Length (cm)	Units
M00515171	08714729455813	.035	180	Box 2

[Back to Contents](#)



Delivery System

Low Profile

- The compressed stent and delivery system have between a 5-9mm outer diameter. The system is designed to facilitate advancement across tumors and may be placed via flexible or rigid bronchoscopy

Flexibility

- The flexible delivery catheter is designed to enhance the ease of navigation through the airway

Radiopaque Markers

- Radiopaque markers on the delivery catheter are designed to target the deployed position of the stent

Distal or Proximal Release

- Different release systems are designed to allow the physician greater control over stent deployment



Post Stent*

Ultraflex™

Tracheobronchial Stent System

Ultraflex Tracheobronchial Uncovered Stent System

Uncovered Distal Release	Uncovered Distal Release GTIN	Uncovered Proximal Release	Proximal Release GTIN	Expanded Stent OD** (mm)	Expanded Stent Length (mm)	Uncovered Compressed Stent OD (mm)	Tip Max OD (mm)	Units
-	-	M00576410	08714729837770	8	20	7	4.1	Each
-	-	M00576420	08714729837787	8	40	7	4.1	Each
-	-	M00576430	08714729837794	10	20	7	4.1	Each
M00576300	08714729837688	-	-	10	30	7	4.1	Each
-	-	M00576440	08714729837800	10	40	7	4.1	Each
-	-	M00576450	08714729837817	12	20	7	4.1	Each
M00576310	08714729837695	-	-	12	30	7	4.1	Each
-	-	M00576460	08714729837824	12	40	7	4.1	Each
-	-	M00576470	08714729837831	14	20	9	4.1	Each
M00576320	08714729837701	-	-	14	30	9	4.1	Each
-	-	M00576480	08714729837848	14	40	9	4.1	Each
-	-	M00576490	08714729837855	14	60	9	4.1	Each
M00576330	08714729837718	-	-	16	40	9	5.3	Each
M00576340	08714729837725	-	-	16	60	9	5.3	Each
M00576350	08714729837732	-	-	18	40	11	5.3	Each
M00576360	08714729837749	-	-	18	60	11	5.3	Each
M00576370	08714729837756	-	-	20	40	11	5.3	Each
M00576380	08714729837763	-	-	20	60	11	5.3	Each

Warning: The safety and effectiveness of this device for use in the vascular system has not been established and can result in serious harm and/or death.

*Image courtesy of Dr. David R. Riker

**Data on file at Boston Scientific

Indications, Contraindications, Warnings and Instructions for Use can be found in the product labeling supplied with each device.
CAUTION: Federal (USA) law restricts this device to sale by or on the order of a physician.

Boston Scientific

Boston Scientific Corporation
300 Boston Scientific Way
Marlborough, MA 01752
www.bostonscientific.com
www.BronchSuite.com

Ordering Information
1.888.272.1001

©2023 Boston Scientific Corporation
or its affiliates. All rights reserved.

ENDO-62108-AF

All photography owned by Boston Scientific unless otherwise noted.

All trademarks are the property of their respective owners.

Indications, Contraindications, Warnings and Instructions for Use can be found in the product labeling supplied with each device.

CAUTION: U.S. Federal law restricts this device to sale by or on the order of a physician.